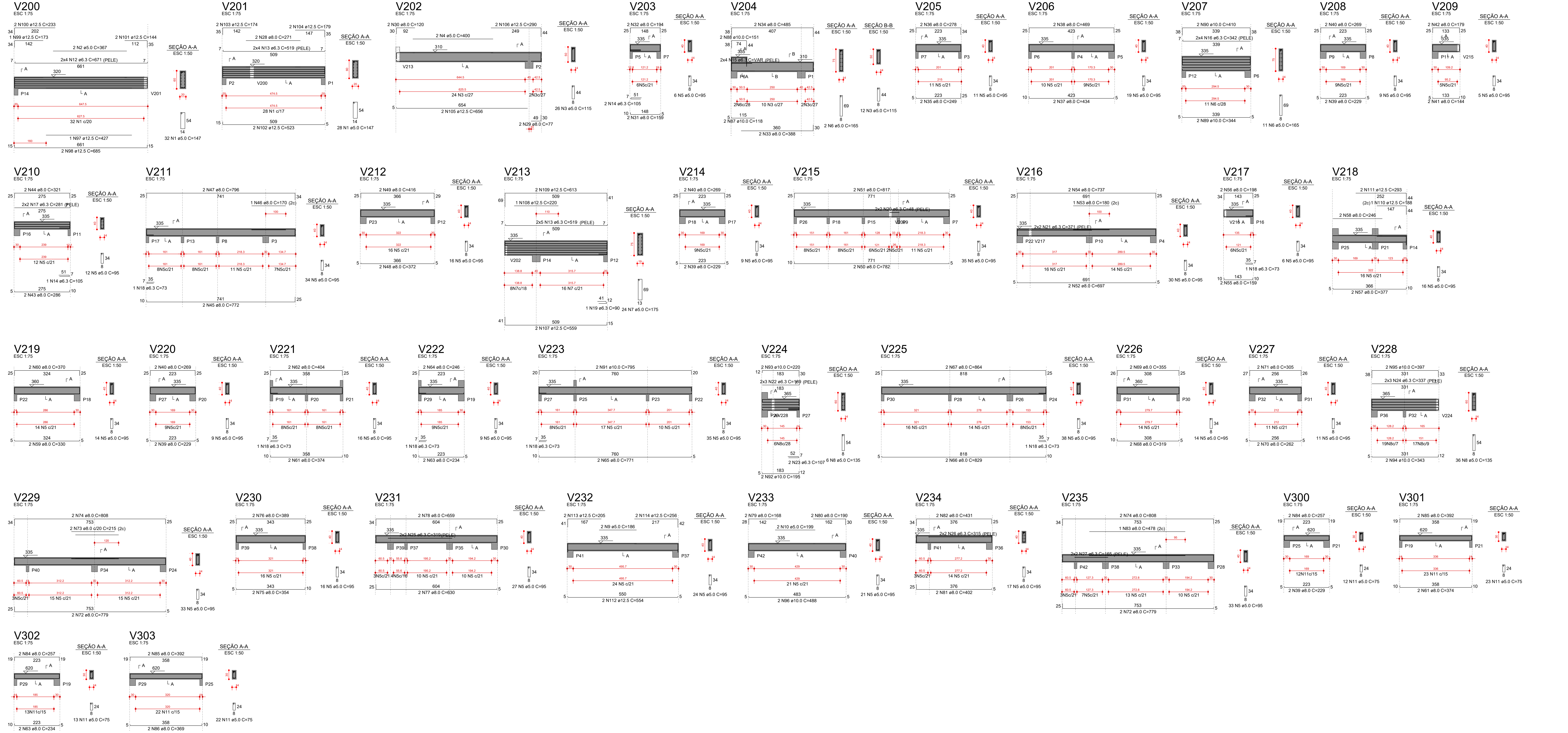


Vigas Nivel 2



RELAÇÃO DO AÇO

CAPO	N	DIAM (mm)	QUANT	CLINTE (mm)	C.TOTAL (mm)	PESO (kg)
CA60	1	5.0	60	147	6820	734
CA60	2	5.0	36	115	4370	463
CA60	3	5.0	36	115	4370	463
CA60	4	5.0	36	115	4370	463
CA60	5	5.0	36	115	4370	463
CA60	6	5.0	36	115	4370	463
CA60	7	5.0	36	115	4370	463
CA60	8	5.0	36	115	4370	463
CA60	9	5.0	36	115	4370	463
CA60	10	5.0	36	115	4370	463
CA60	11	5.0	36	115	4370	463
CA60	12	5.0	36	115	4370	463
CA60	13	5.0	36	115	4370	463
CA60	14	5.0	36	115	4370	463
CA60	15	5.0	36	115	4370	463
CA60	16	5.0	36	115	4370	463
CA60	17	5.0	36	115	4370	463
CA60	18	5.0	36	115	4370	463
CA60	19	5.0	36	115	4370	463
CA60	20	5.0	36	115	4370	463
CA60	21	5.0	36	115	4370	463
CA60	22	5.0	36	115	4370	463
CA60	23	5.0	36	115	4370	463
CA60	24	5.0	36	115	4370	463
CA60	25	5.0	36	115	4370	463
CA60	26	5.0	36	115	4370	463
CA60	27	5.0	36	115	4370	463
CA60	28	5.0	36	115	4370	463
CA60	29	5.0	36	115	4370	463
CA60	30	5.0	36	115	4370	463
CA60	31	5.0	36	115	4370	463
CA60	32	5.0	36	115	4370	463
CA60	33	5.0	36	115	4370	463
CA60	34	5.0	36	115	4370	463
CA60	35	5.0	36	115	4370	463
CA60	36	5.0	36	115	4370	463
CA60	37	5.0	36	115	4370	463
CA60	38	5.0	36	115	4370	463
CA60	39	5.0	36	115	4370	463
CA60	40	5.0	36	115	4370	463
CA60	41	5.0	36	115	4370	463
CA60	42	5.0	36	115	4370	463
CA60	43	5.0	36	115	4370	463
CA60	44	5.0	36	115	4370	463
CA60	45	5.0	36	115	4370	463
CA60	46	5.0	36	115	4370	463
CA60	47	5.0	36	115	4370	463
CA60	48	5.0	36	115	4370	463
CA60	49	5.0	36	115	4370	463
CA60	50	5.0	36	115	4370	463
CA60	51	5.0	36	115	4370	463
CA60	52	5.0	36	115	4370	463
CA60	53	5.0	36	115	4370	463
CA60	54	5.0	36	115	4370	463
CA60	55	5.0	36	115	4370	463
CA60	56	5.0	36	115	4370	463
CA60	57	5.0	36	115	4370	463
CA60	58	5.0	36	115	4370	463
CA60	59	5.0	36	115	4370	463
CA60	60	5.0	36	115	4370	463
CA60	61	5.0	36	115	4370	463
CA60	62	5.0	36	115	4370	463
CA60	63	5.0	36	115	4370	463
CA60	64	5.0	36	115	4370	463
CA60	65	5.0	36	115	4370	463
CA60	66	5.0	36	115	4370	463
CA60	67	5.0	36	115	4370	463
CA60	68	5.0	36	115	4370	463
CA60	69	5.0	36	115	4370	463
CA60	70	5.0	36	115	4370	463
CA60	71	5.0	36	115	4370	463
CA60	72	5.0	36	115	4370	463
CA60	73	5.0	36	115	4370	463
CA60	74	5.0	36	115	4370	463
CA60	75	5.0	36	115	4370	463
CA60	76	5.0	36	115	4370	463
CA60	77	5.0	36	115	4370	463
CA60	78	5.0	36	115	4370	463
CA60	79	5.0	36	115	4370	463
CA60	80	5.0	36	115	4370	463
CA60	81	5.0	36	115	4370	463
CA60	82	5.0	36	115	4370	463
CA60	83	5.0	36	115	4370	463
CA60	84	5.0	36	115	4370	463
CA60	85	5.0	36	115	4370	463
CA60	86	5.0	36	115	4370	463
CA60	87	5.0	36	115	4370	463
CA60	88	5.0	36	115	4370	463
CA60	89	5.0	36	115	4370	463
CA60	90	5.0	36	115	4370	463
CA60	91	5.0	36	115	4370	463
CA60	92	5.0	36	115	4370	463
CA60	93	5.0	36	115	4370	463
CA60	94	5.0	36	115	4370	463
CA60	95	5.0	36	115	4370	463
CA60	96	5.0	36	115	4370	463
CA60	97	5.0	36	115	4370	463
CA60	98	5.0	36	115	4370	463
CA60	99	5.0	36	115	4370	463
CA60	100	5.0	36	115	4370	463
CA60	101	5.0	36	115	4370	463
CA60	102	5.0	36	115	4370	463
CA60	103	5.0	36	115	4370	463
CA60	104	5.0	36	115	4370	463
CA60	105	5.0	36	115	4370	463
CA60	106	5.0	36	115	4370	463
CA60	107	5.0	36	115	4370	463
CA60	108	5.0	36	115	4370	463
CA60	109	5.0	36	115	4370	463
CA60	110	5.0	36	115	4370	463
CA60	111	5.0	36	115	4370	463
CA60	112	5.0	36	115	4370	463
CA60	113	5.0	36	115	4370	463
CA60	114	5.0	36	115	4370	463

RESUMO DO AÇO

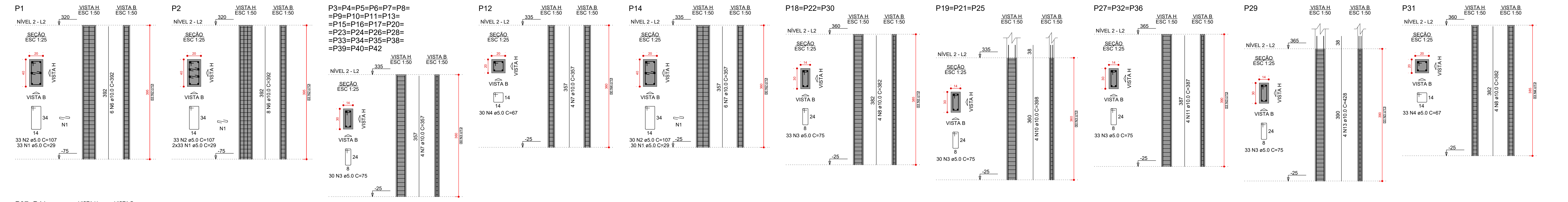
CAPO	DIAM (mm)	C.TOTAL (mm)	PESO + 0% (kg)
CA50	5.0	294.6	69.7
CA50	8.0	542.2	213.9
CA50	10.0	69.2	42.7
CA60	12.5	117.4	113.1
CA60	5.0	826.3	127.4

PESO TOTAL (kg): 439.3

CA60: 127.4

Volume de concreto (C-25) = 11.01 m³

Pilares Nivel 2



RELAÇÃO DO AÇO

CAPO	N	DIAM (mm)	QUANT	CLINTE (mm)	C.TOTAL (mm)	PESO (kg)
CA60	1	5.0	129	29	3741	394
CA60	2	5.0	96	107	10272	1072
CA60	3	5.0	1217	75	61276	6427
CA60	4	5.0	63	67	4221	441
CA60	5	5.0	12	23	1196	125
CA60	6	10.0	14	352	5485	575
CA60	7	10.0	110	357	35070	3657
CA60	8	10.0	16	382	6112	640
CA60	9	10.0	12	292	3384	354
CA60	10	10.0	12	398	4776	501
CA60	11	10.0	12	387	4664	489
CA60	12	10.0	4	252	1098	115
CA60	13	10.0	4	428	1712	179
CA60	14	12.5	12	357	4284	449

RESUMO DO AÇO

CAPO	DIAM (mm)	C.TOTAL (mm)	PESO + 0% (kg)
CA50	5.0	294.6	69.7
CA50	10.0	603.9	699.3
CA50	12.5	42.8	41.3
CA50	5.0	1107	170.8

PESO TOTAL (kg): 450.6

CA60: 170.6

Volume de concreto (C-25) = 7.36 m³

PREFEITURA MUNICIPAL DE GUZOLÂNDIA

J. I. R. DA SILVA SOUZA - ENGENHARIA - ME
 CNPJ: 24.191.067/0001-19 | CREA SP: 2043989

Av. Antônio Cavassana, 466, Apto. 72, Condição III, Araguatuba/SP | CEP: 16.013-395
 16 3117-5386 | 16 98102-7049 | 16 99179-5786 | js.engenharia@gmail.com

Projeto Estrutural
 Departamento Municipal de Educação

Arquiteto: Jefferson Souza
 Avenida João Tim, Limeira, Guzolandia/SP.

Eng. Civil Jefferson Souza
 CRÉA SP - 509236850

20/08/2019 EMISSÃO INICIAL
 20/08/2019 INDICADA

ENC: JEFFERSON

004 ES